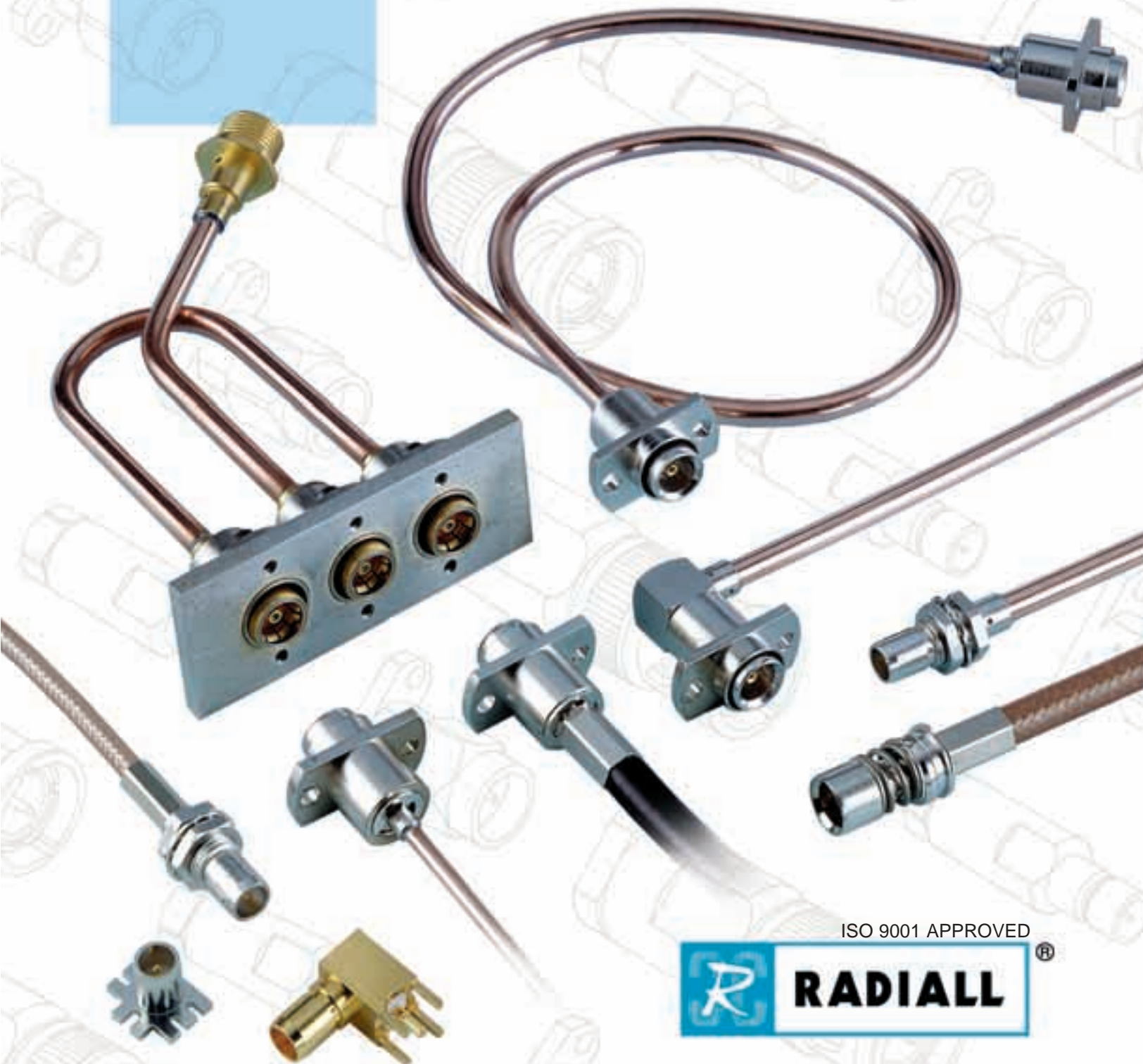


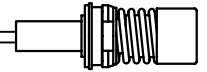
**SUBMINIATURE COAXIAL CONNECTORS**  
for blind-mate applications

# Commercial BMA series



ISO 9001 APPROVED





These new models have been especially designed for **BLIND-MATE APPLICATIONS** (back-planes and links between mother-card and daughter-cards) in the telecom and datacom industries **up to 22 GHz**.

The new **commercial BMA series** connectors are fully compatible with **MIL standard BMA series**.

All piece parts have been optimized to combine the lowest cost possible in a high performance design.

The cable connectors are crimp type on double or single braid flexible cables and solder type on semi-rigid cables. They are manufactured in brass with BBR finish (non-magnetic Bronze alloy). The PCB receptacles are made of brass with gold finish.

### ELECTRICAL CHARACTERISTICS

Impedance		50 Ω
Operating frequency		DC to 22 GHz for S.R. cable DC to 12.4 GHz for others
Typical V.S.W.R.	∅2.6 / ∅5 + .141" .085" receptacles	1.15 + 0.02 F (F in GHz) 1.07 + 0.01 F (F in GHz) 1.25 max. at 10 GHz
RF insertion loss	(dB) cable connectors receptacles	0.03 √F (F in GHz) 0.07 √F (F in GHz)
Testing voltage	(V RMS)	1000
Working voltage	(V RMS)	350
Insulation resistance	(MΩ)	5000

### ENVIRONMENTAL CHARACTERISTICS

Temperature range	- 65 °C, + 125 °C
-------------------	-------------------

### MECHANICAL CHARACTERISTICS

Life		500 matings
Cable retention force	.085" .141" ∅2.6 D ∅5 D	136 N 272 N 110 N 180 N
Total misalignment		+/- 0.475 floating

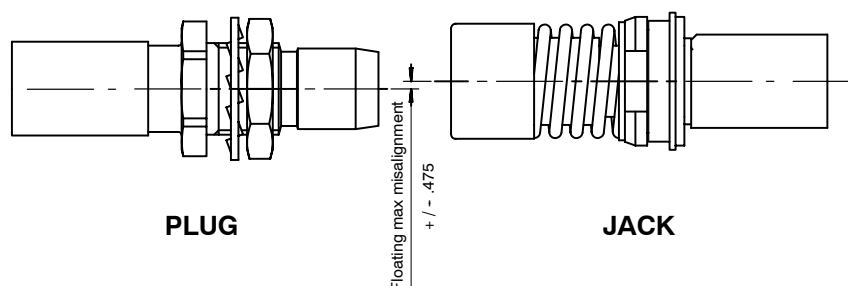
### MATERIALS

Bodies	Brass
Center contacts	Bronze
Insulator	PTFE
Spring	Stainless steel

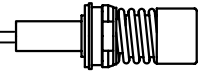
### PLATING

Bodies	plugs, jacks PCB receptacles	BBR ( <i>non magnetic plating</i> ) Gold
Center contacts		Gold

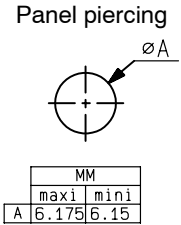
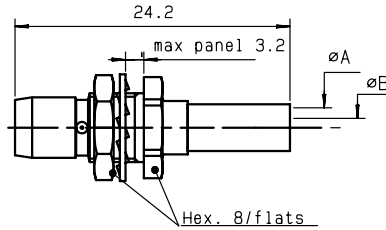
Standard packaging : 100 pieces. For unit packaging, add W after the part number.



All dimensions are given in mm.

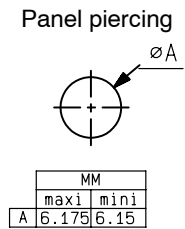
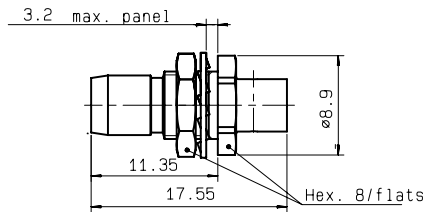


### STRAIGHT FIXED BULKHEAD MOUNT PLUGS, CRIMP TYPE FOR FLEXIBLE CABLES



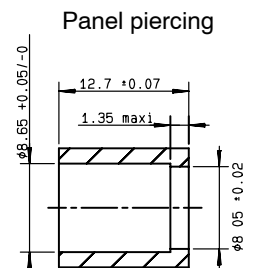
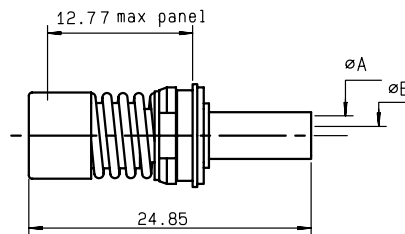
Cable type	Part number	Center contact	Dimensions	
			A	B
$\varnothing 2.6 / 50 / S$	<b>R128 083 827</b>	captive	3.25	1.63
$\varnothing 2.6 / 50 / D$	<b>R128 084 827</b>		3.5	1.63
$\varnothing 5 / 50 / D$	<b>R128 088 827</b>		5.55	3.2

### STRAIGHT FIXED BULKHEAD MOUNT PLUGS, SOLDER TYPE FOR SEMI-RIGID CABLES

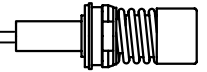


Cable type	Part number	Center contact
.085"	<b>R128 052 827</b>	captive
.141"	<b>R128 055 827</b>	

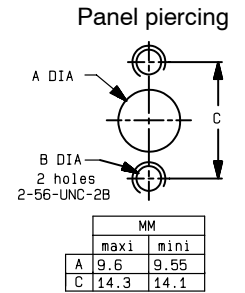
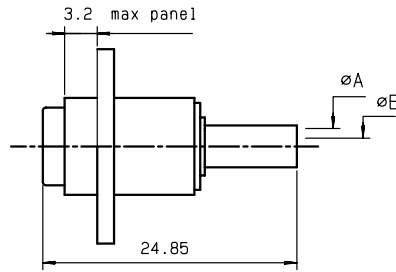
### STRAIGHT FLOATING SNAP-IN MOUNT JACKS, CRIMP TYPE FOR FLEXIBLE CABLES



Cable type	Part number	Center contact	Dimensions	
			A	B
$\varnothing 2.6 / 50 / S$	<b>R128 233 827</b>	captive	3.25	1.63
$\varnothing 2.6 / 50 / D$	<b>R128 234 827</b>		3.5	1.63
$\varnothing 5 / 50 / D$	<b>R128 238 827</b>		5.55	3.2

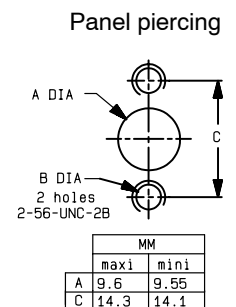
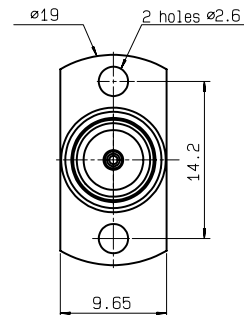
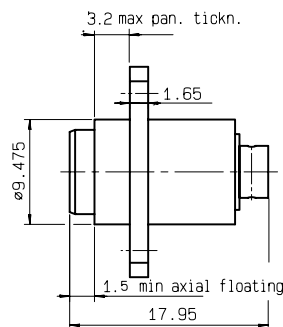


### STRAIGHT FLOATING FLANGE MOUNT JACKS, CRIMP TYPE FOR FLEXIBLE CABLES



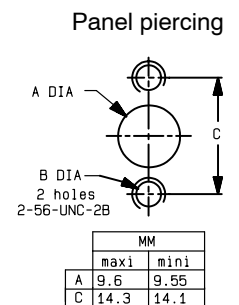
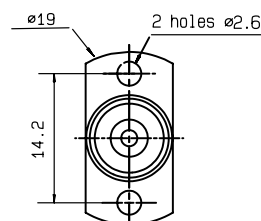
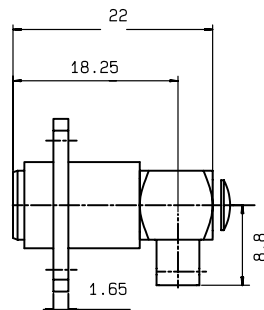
Cable type	Part number	Center contact	Dimensions	
			A	B
Ø2.6 / 50 / S	<b>R128 263 827</b>	captive	3.25	1.63
Ø2.6 / 50 / D	<b>R128 264 827</b>		3.5	1.63
Ø5 / 50 / D	<b>R128 268 827</b>		5.55	3.2

### STRAIGHT FLOATING FLANGE MOUNT JACKS, SOLDER TYPE FOR SEMI-RIGID CABLES

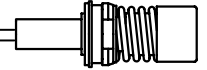


Cable type	Part number	Center contact
.085"	<b>R128 292 827</b>	captive
.141"	<b>R128 295 827</b>	

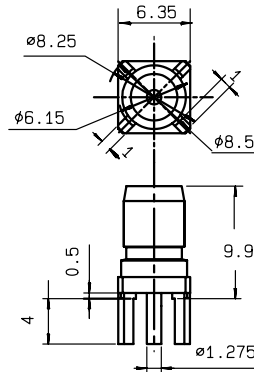
### RIGHT ANGLE FLOATING FLANGE MOUNT JACKS, SOLDER TYPE FOR SEMI-RIGID CABLES



Cable type	Part number	Center contact
.085"	<b>R128 360 827</b>	captive
.141"	<b>R128 359 827</b>	

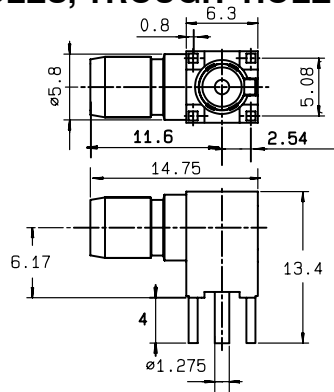


### STRAIGHT PCB MALE RECEPTACLES, TROUGH-HOLE SOLDER TYPE



Part number	Packaging
<b>R128 425 820</b>	100 pieces
<b>R128 425 840●</b>	plastic stick of 60 pieces

### RIGHT ANGLE PCB MALE RECEPTACLES, TROUGH-HOLE SOLDER TYPE



Part number	Packaging
<b>R128 665 820</b>	100 pieces
<b>R128 665 830●</b>	plastic stick of 60 pieces

### PCB RECEPTACLES, SURFACE MOUNT TYPE

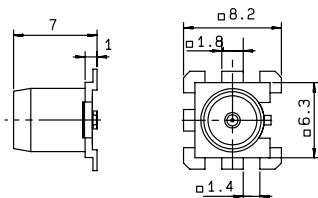


Fig. 1

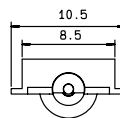
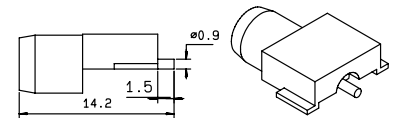


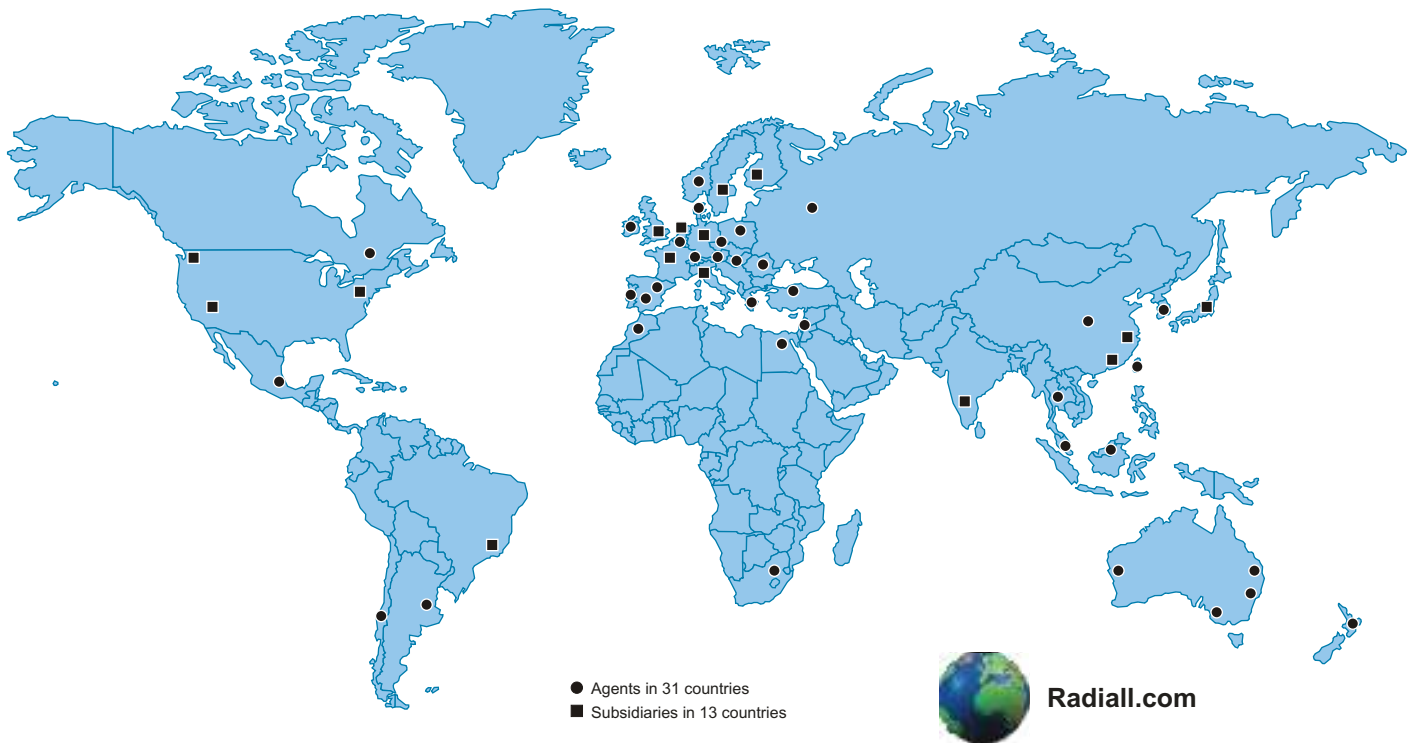
Fig. 2



	Part number	Fig.	Packaging
SMT ON BOARD STRAIGHT MALE	<b>R128 424 830●</b>	1	reel of 100 pieces
SMT ON BOARD RIGHT ANGLE MALE	<b>R128 664 830●</b>	Not shown	reel of 100 pieces
SMT EDGE CARD MALE	<b>R128 403 850●</b>	2	reel of 100 pieces

**EXTRACTION TOOL** for snap-in models R282 918 000  
**CRIMPING TOOL WITH FIXED DIES** : R282 286 000

● Upon request



● Agents in 31 countries  
 ■ Subsidiaries in 13 countries



**Radiall.com**

**RADIALL WORLDWIDE LOCATIONS**

**EUROPE**

**France - RADIALL HEADQUARTERS**

101, Rue Ph. Hoffmann - 93116 ROSNY sous BOIS (Paris)  
 Tel. : +33 1 49 35 35 35 Fax : +33 1 48 54 63 63  
 E-Mail : info@radiall.com

**Finland - RADIALL FIN**

Pilot Business Park - Lentokatu 2 - FIN-90460 OULUNSALO  
 Tel. : +358 852 70 130 Fax : +358 852 70 105  
 E-Mail : info@radiall.fi

**Germany - RADIALL G.m.b.H.**

CarlZeiss Str. 10 Postfach 200143 - D63307 RÖDERMARK (Frankfurt)  
 Tel. : +49 60 74 91 07 0 Fax : +49 60 74 91 07 70  
 E-Mail : info@radiall.de  
 Regional offices : Munich

**Italy - RADIALL Elettronica S.R.L.**

Via Concordia, 5 - I20090 ASSAGO MILANO  
 Tel. : +39 02 48 85 121 Fax : +39 02 48 84 30 18  
 E-Mail : radiall@tin.it  
 Regional office : Roma

**Netherlands - RADIALL B.V.**

Postbus 64 - 3870 CB HOEVELAKEN  
 Tel. : +31 33 253 40 09 Fax : +31 33 253 45 12  
 E-Mail : info@radiall.nl

**Sweden - RADIALL A.B.**

Sjöängsvägen 2 - SE-192 72 SOLLENTUNA (Stockholm)  
 Tel. : +46 844 434 10 Fax : +46 875 449 16  
 E-Mail : info@radiall.se

**U.K. - RADIALL Ltd**

10, Perivale Industrial Park, Horsenden Lane south  
 PERIVALE Middlesex UB6 7RL (London)  
 Tel. : +44 208 991 7700 Fax : +44 208 991 7769  
 E-Mail : info@radiall.co.uk

**AMERICA**

**USA - RADIALL, INC.**

RF Coaxial connectors, Microwave devices & Fiber optic connectors  
 300 Long Beach Blvd - STRATFORD Connecticut 06615  
 Tel. : +1 203 380 9800 Fax : +1 888 387 0001  
 E-Mail : sales@radiallusa.com

**USA - RADIALL LARSEN Antenna Technologies, INC**

Antennas  
 3611 NE 112<sup>nd</sup> Avenue - VANCOUVER, Washington 98682  
 Tel. : +1 360 944 7551 Fax : +1 360 944 7556  
 E-Mail : info@radialllarsen.com

**USA - RADIALL JERRIK, INC.**

Mill/Aerospace Markets  
 102 West Julie Drive - TEMPE, Arizona 85283 (Phoenix)  
 Tel. : +1 480 730 5700 Fax : +1 480 730 5800  
 E-Mail : sales@radialljerrick.com

**Brasil - RADIALL do Brasil**

Largo do Machado, 54 sala 706 - Catete  
 22221-020 RIO DE JANEIRO  
 Tel. : +55 21 2558 05 76 Fax : +55 21 2245 97 63  
 E-Mail : hubertm@radiall.com.br

**ASIA**

**China - SHANGHAI RADIALL Electronic Co., Ltd**

N° 390 Yong He Road 200072 - SHANGHAI  
 Tel. : +86 21 66 52 37 88 Fax : +86 21 66 52 11 77  
 E-Mail : radialls@online.sh.cn

**Japan - NIHON RADIALL KK**

1-3-10, Higashi nihonbashi, Chuokku, TOKYO 103-0004  
 Tel. : +81 3 3866 23 90 Fax : +81 3 3866 23 91  
 E-Mail : emiko@radiall.co.jp

**HongKong - RADIALL Electronics Ltd**

Elite Industrial Centre, Room 212, 2/F  
 N° 883 Cheung Sha Wan Road - KOWLOON HONG KONG  
 Tel. : +852 29 59 38 33 Fax : +852 29 59 26 36  
 E-Mail : info@radiall.com.hk

**India - RADIALL PROTECTRON**

25 D, II Phase, Peenya Industrial Area - BANGALORE 560058  
 Tel. : +91 80 83 95 271 Fax : +91 80 83 97 228  
 E-Mail : radiall@vsnl.com

**REPRESENTED IN**

Africa	Israël	South Africa
Australia	Middle East	South Korea
Belgium	Poland	Switzerland
Greece	Spain	Turkey

For the above countries, please contact the local agent or RADIALL HEADQUARTERS at export@radiall.fr

March 2000 Edition

D1 128 CE



Printed in France <sup>®</sup>

Registered Trade Mark

This information is intended as a guide only. To ensure a continuing policy of product improvement, Radiall reserves the right to modify its specifications without prior notification.